

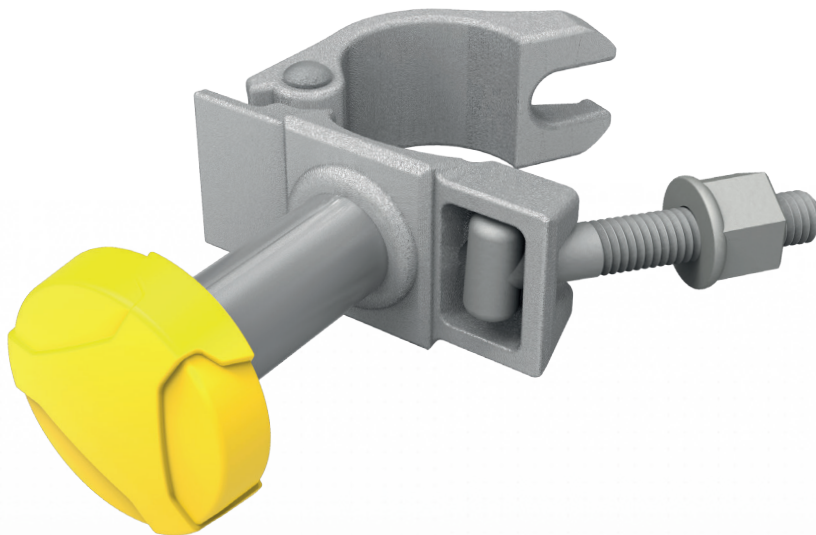
SCAFFOLDING BRACKET EX

For flexible positioning on scaffoldings

SCANGRIP accessories are approved to be used in explosive atmosphere in combination with NOVA-EX and NOVA-EX R.

The bracket is specially designed to fix NOVA-EX work lights on scaffoldings. The mounting bracket can be attached to any round object \varnothing 40-50 mm.

The bracket is made of the same sturdy quality as other standard fittings for scaffolding. When mounted in the bracket the lamp can be tilted to the requested lighting angle.



DESIGNED BY
SCANGRIP
IN DENMARK

TECHNICAL SPECIFICATIONS

Weight 0.9 kg



II 2G Ex db eb mb op is IIC T4 Gb
II 2D Ex tb IIIC T85°C Db IP65

SCAFFOLDING BRACKET EX

Item no. 03.5609

